

MBS Equine Universal Adhesive

Application Guide



MBS



Introduction to MBS Equine Universal Adhesive

- 🌀 Multibond Solutions MBS Equine Universal Adhesive is a specialist adhesive specifically for the repair and rebuild of hooves as well as for bonding of aluminium and steel* shoes.
- 🌀 The elastomeric nature of the MBS Equine Universal closely matches the movement of a hoof during the transition from a loaded to an unloaded state.
- 🌀 MBS Equine Universal adhesive has remarkable tensile strength and can provide an excellent bond to the cleaned and prepared hoof material.
- 🌀 Because of the high tensile strength, MBS Equine can be used to effectively repair quarter crack and sand cracks etc.
- 🌀 MBS Universal Equine adhesive can be used to effectively bond aluminium shoes in place either directly onto the hoof or onto a MBS Equine hoof rebuild.
- 🌀*MBS Universal Equine adhesive can be used to bond steel shoes in place when used in conjunction with our MBS Equine Red Primer on the cleaned and prepared steel shoe.
- 🌀 MBS Universal Equine adhesive cures quickly to form a hard yet flexible structure that can be easily worked and shaped with a rasp and sander.
- 🌀 MBS Universal Equine adhesive is supplied in a 490mm cartridge which is larger than the norm. The cartridge contains both the components which are mixed in the supplied mixer nozzle. Two nozzles are supplied free with each cartridge of adhesive and additional nozzles can be purchased separately. A smaller 50ml cartridge and nozzle is also available.
- 🌀 MBS Universal Equine adhesive has undergone over two years of intensive field testing to demonstrate its effectiveness.

MBS Equine Universal Adhesive Application Guide

This Product is a specialist material and should only be used by a qualified farrier.

MBS Equine Adhesive is a two-component material which is mixed when passing through the mixer nozzle. It is important that a small amount of the material is gunned out prior to fixing the nozzle to ensure the correct amounts are dispensed into the nozzle once fitted.

HOOF REPAIR

PREPARATION

NOTE. Any hoof infection should be treated prior to commencement of any repair.

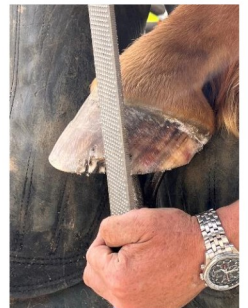
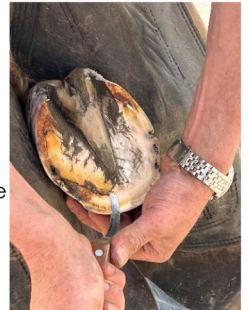
To ensure a bond to the hoof whether repairing or fixing a shoe it is imperative that the hoof is thoroughly prepared and all dirt and residue removed.

All loose, damaged or flaking wall material needs to be removed.

Trim and rasp the hoof back to clean hoof before starting the process. Using a knife and wire brush or rasp remove any dirt in cracks around the hoof.

Once the hoof has been fully and effectively cleaned, wipe the surface using a MBS Surface Preparation Wipe.

When working close to the coronary band it is recommended that the hairline is taped around the hoof to prevent adhesive contamination.



APPLICATION

It is sometimes easier to gun the adhesive material into a disposable Paper cup and apply onto the hoof using a tongue depressor or flexible filler knife.

The adhesive can be shaped using a tongue depressor to assist the repair to the hoof wall. You will need to work quickly as the material starts to cure once mixed especially in warm weather.

The material can be sculpted into shape while it remains uncured.

Once the adhesive has been applied, wrap the hoof area using farriers Cling rap and keep the hoof held up for a couple of minutes to allow the curing of the adhesive to start.

Once the adhesive has cured the hoof can be un-wrapped, and the MBS Equine Universal repair trimmed and shaped to fit the new shoe.

A new shoe can be nailed onto the repaired hoof as per a normal hoof.



Showing build-up of
MBS Equine adhesive



The damaged hoof now
repaired



Job done

BONDING ON ALUMINIUM PLATES

HOOF PREPARATION

All loose, damaged or flaking wall material needs to be removed.

Trim and rasp the hoof back to clean hoof before starting the process. Using a wire brush remove any dirt in cracks around the hoof.

Once the hoof has been fully and effectively cleaned, wipe the surface using a MBS Surface Preparation Wipe.

BONDING THE ALUMINIUM SHOE

When the shoe has been shaped to the hoof and is ready to fit, wipe the bond side with a MBS wipe.

It is easier to gun out the adhesive directly onto the shoe rather than using the cup and tongue depressor.

Using a tongue depressor apply an even coating of the MBS adhesive to the hoof.

Apply a bead of the adhesive to ensure a good coverage of the shoe. This ensures that a flat fit to the hoof can be achieved.

Once the shoe is in place and correctly aligned wrap the hoof. With farriers cling wrap and hold the leg for a couple of minutes to keep the hoof in the air.

Allow the hoof to rest on the ground with the wrap still on for a few more minutes till cured, check by feeling through the cling wrap, then it can be unwrapped. Any excess adhesive can be removed with a knife or rasp to clean up the hoof.



BONDING STEEL SHOES

*The process is as per the above but prior to bonding, the steel shoe needs to be primed using MBS MP-100 Primer. This primer will flash off in a minute or so.

MBS



Multibond Solutions Ltd

Unit 10, Enterprise City Meadowfield Avenue Spennymoor Co Durham DL16 6JF

Tel: 01388 420200